

**700045 (20.0.00.B)**

- standard 8 - 14 VAC/DC, 12 ohm
- without strike plate
- asymmetrical

**700044 (30.1.03.B)**

- standard 8 - 14 VAC/DC, 12 ohm
- with adjustable latch and long strike plate
- symmetrical

**700043 (31.1.03.B)**

- see above but with mechanical release
- symmetrical

**700046 (30.1.00.B)**

- see above but with adjustable latch
- without mechanical release
- without strike plate
- symmetrical

**700050 (32A.1.03.B)**

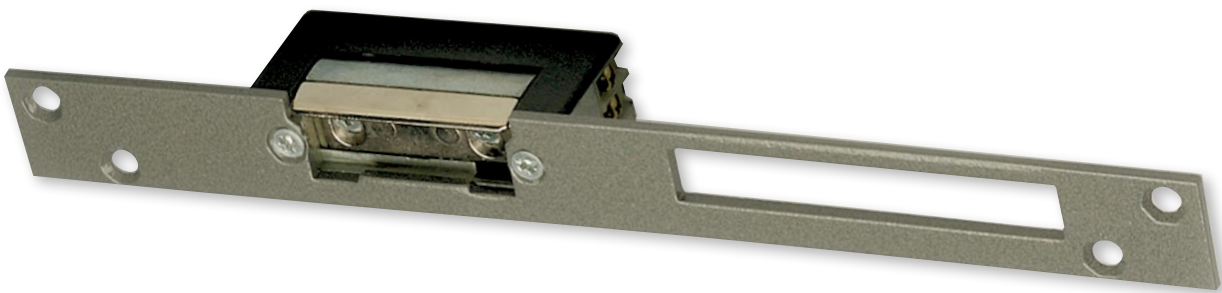
- standard door opener 8 - 14 VAC/DC, 12 ohm
- with adjustable latch
- with internal retaining contact (leaf spring) and long strike plate
- symmetrical

**700040 (30.1.03.E)**

- standard 12 VAC/DC, 50 ohm
- with adjustable latch and long strike plate
- symmetrical
- particularly suitable for housing projects with long cable runs to the door opener

**700053 (24.1.01E)**

- quiescent current door opener symmetrical
- without adjustable latch
- AC/DC
- 12 V, 50 ohm



Article No.	Original article No.	Description	EUR/pc.
700045	20.0.00.B	door opener	21,00 €
700044	30.1.03.B	door opener	39,00 €
700043	31.1.03.B	door opener	41,00 €
700046	30.1.00.B	door opener	38,00 €

Article No.	Original article No.	Description	EUR/pc.
700050	32A.1.03.B	door opener	54,00 €
700040	30.1.03.E	door opener	51,00 €
700053	24.1.01E	quiescent current door opener	47,00 €